

The logo for CLIPSAL, featuring a stylized 'C' with three vertical bars in red, purple, and blue to its left, followed by the word 'CLIPSAL' in a bold, black, sans-serif font.The logo for EMERGI-LITE, with a yellow banner containing a white icon of an open book and the text 'EMERGI-LITE' in blue, bold, sans-serif font. Below the banner, the text 'Member of Thomas & Betts' is written in a smaller, blue, sans-serif font.The logo for PowerBreaker, featuring a red inverted triangle above the word 'PowerBreaker' in white, bold, sans-serif font, which is set against a blue rectangular background with a white border.The logo for SMITHS TIME GUARD, with 'SMITHS' in blue, bold, sans-serif font above 'TIME GUARD' in black, bold, sans-serif font. A blue eagle with its wings spread is positioned between the two words.

## Contents

Fire Detection	593
Home Automation	593
Magnetic Door Holder	596
MEM Wiring Accessories	591
Mounting Boxes	595
MK Wiring Accessories	588
Time Switches	
Electronic	596
Plug In	597
Weatherproof Accessoriers	595

**Electrical Installation Products  
& Time Switches**

**18**

Wiring Accessories

MK	FARNELL	MK	FARNELL	MK	FARNELL
K1070WHI	987-244	2531WHI	107-723	K4875WHI	937-347
K1040WHI	987-256	2532WHI	107-724	K4878PWHI	987-359
K337WHI	987-220	K2757WHI	987-190	K5105WHI	987-281
K370WHI	987-268	2949WHI	107-720	K5215WHI	987-293
K377WHI	987-232	2958WHI	107-719	K5423WHI	987-270
K1521WHI	987-360	3164WHI	107-715	K2031WHI	987-438
K1522WHI	987-372	3191WHI	107-698	6301WHI	107-722
K2025WHI	987-463	3192WHI	107-699	735WHI	107-721
K2031WHI	987-438	K3827WHI	987-384	K781WHI	987-189
K2134WHI	987-402	K3828WHI	987-396	QFB1WHI	108-364
K2140WHI	987-426	K4870WHI	987-300	QFB2WHI	108-365
K2142WHI	987-440	K4871WHI	987-311	K2747WHI	987-207
K2160WHI	987-414	K4872WHI	987-323	K2657WHI	987-219
K2172WHI	987-451	K4873WHI	987-335		

SEC130X

Logic plus<sup>SM</sup>  
Switchsocket Outlets 13 Amp



H = 86, W = 86 (146 2 gang), D = 17, fixing centres 60.3 (120.6 2 gang)



- In line terminals for easy connection
- 3 Pin operated safety shutter
- Backed out captive terminal screws
- Double pole switching
- Optional neon in rocker for high visibility status indication
- Approved to **BS1363 PT2:1995**

SEC187

Non Switched	Mfrs. List No.	Order Code	1+	10+	30+	50+
2 Gang	K781 WHI	.987-189				
DP Switched	Mfrs. List No.	Order Code	1+	10+	30+	50+
1 Gang	K2751 WHI	.987-190				
2 Gang	K2747 WHI	.987-207				
1 Gang + neon	K2657 WHI	.987-219				

Non Switched	Mfrs. List No.	Order Code	1+	10+	20+	50+	100+
1 Gang	K780 WHI	NEW 721-6579					

DP Switched	Mfrs. List No.	Order Code	1+	5+	25+	50+	100+
2 Gang, Outboard	K2746 WHI	NEW 721-6592					
<b>Rockers</b>							
2 Gang + neon	K2647 WHI	NEW 721-6580					
3 Gang	K2737 WHI	NEW 721-6609					

Dedicated Earth	Mfrs. List No.	Order Code	1+	2+	5+	10+	20+
1 Gang	K1257DIWHI	NEW 721-6658					
2 Gang	K1246DIWHI	NEW 721-6660					

Socket Outlet - RCD Protected, 13A



H = 86, W = 146, Fixing centres = 120.6

- Full RCD 30mA trip current protection
  - Trips on loss of phase or neutral
  - 'Active' control circuit prevents sudden energisation of dangerous machinery when power resumes
  - 3 Pin operated shutter
  - Approved to **BS7288: 1990**
- Voltage rating 220-240Vac 50Hz  
Trip current rating 30mA  
Typical trip time <40ms



FOR SUITABLE MOUNTING BOXES SEE PAGE 595

SEC195

RCD Control Circuit	Mfrs. List No.	Order Code	1+	2+	5+	10+	20+
30mA Passive	K6303WHI	NEW 721-6610					
DP Filtered Outlets	Mfrs. List No.	Order Code	1+	2+	5+	10+	20+
2 Gang, Spike	K1816WHI	NEW 721-6622					
2 Gang, Spike & RFI	K1826WHI	NEW 721-6634					
Replacement Filter Cassette	K1800WHI	NEW 721-6646					

30mA Active Circuit	Mfrs. List No.	Order Code	1+	10+	20+	30+	50+
K6300 WHI	987-475						

Connection Units, 13A



- In line terminals for easy connection
- Unique cable retainer, push fit with no additional fixing needed
- Neutral contact 'makes first/breaks last' for added safety
- Fitted with 13A **BS1362** fuse
- Optional neon indicator in rocker
- Approved to **BS1363 PT4: 1995**



FOR SUITABLE REPLACEMENT 25.4 6.35 (1" 1/4") FUSES SEE SECTION 27

SEC181

Unswitched	Mfrs. List No.	Order Code	1+	10+	30+	50+
Fused only	K337 WHI	.987-220				
Fused with neon	K377 WHI	.987-232				
DP Switched	Mfrs. List No.	Order Code	1+	10+	30+	50+
Fused with front flex						
Outlet + neon	K1070 WHI	.987-244				
Fused only	K1040 WHI	.987-256				
Fused with neon	K370 WHI	.987-268				

DP Switched	Mfrs. List No.	Order Code	1+	2+	5+	10+	20+
Neon	K1060	NEW 721-6737					
Tamperproof Screw	K1040KOWHI	NEW 721-6749					

Plateswitches, Double Pole  
20A, 32A, 45A



20A DP Switch + Neon  
H = 86, W = 86  
Fixing centres = 60.3



30A DP Switch + Neon  
H = 86, W = 86  
Fixing centres = 60.3



45A DP Switch + Neon  
H = 146, W = 86  
Fixing centres = 120.6

- 20A switch requires a 35mm deep steel mounting box to **BS4662**, or a 32mm mounting box to **BS5733**
- 32A switch can also be used with a 35mm deep mounting box when using 6mm<sup>2</sup> conductors, but a box of at least 41mm deep is required when using 10mm<sup>2</sup> conductors
- 45A switch should be fitted into a 2 gang 47mm deep flush steel, or a 44mm deep surface moulded plastic mounting box and will accept conductors of up to 16mm<sup>2</sup> cross section
- 32A and 45A switches are supplied with 8 self-adhesive plastic identification labels marked hob, fan, oven, water heater, shower, air conditioner, cooker and washing machine
- All switches are fitted with earth terminals
- Supplied with M3.5 mounting screws
- Approved to **BS3676**
- Red switch lever on 30A and 45A switches



FOR SUITABLE MOUNTING BOXES SEE PAGES 595 & 595

SEC104X

	Mfrs. List No.	Order Code	1+	10+	30+	50+
20A + neon	K5423 WHI	.987-270				
32A + neon	K5105 WHI	.987-281				
45A + neon	K5215 WHI	.987-293				

	Mfrs. List No.	Order Code	1+	2+	5+	10+
20A + Neon Marked 'Water Heater'	K5423WHWHI	<b>NEW 721-6750</b>				
20A for dual Immersion Heaters	K5208WHI	<b>NEW 721-6762</b>				
45A	K5205WHI	<b>NEW 721-6890</b>				
45A + neon Marked 'Cooker'	K5215CKWHI	<b>NEW 721-6907</b>				
Cooker Connection unit	K5045WHI	<b>NEW 721-6919</b>				
45A + neon + 13A Switched socket Outlet	K5041WHI	<b>NEW 721-6920</b>				

## Plateswitches, 10 Amp Single Pole



1 Gang Push Switch      2 Gang      3 Gang  
All types H = 86, W = 86, Fixing centres = 60.3

- Two way switches can be wired as either one-way or two-way
- Full 10 Amp rating for fluorescent or inductive loads
- 1 gang push switch has a momentary action with spring return
- Backed out captive screws
- In line terminals and clearly marked backplate
- Supplied with M3.5 mounting screws
- Approved to **BS3676**



Housing: Urea formaldehyde (white)

FOR SUITABLE MOUNTING BOXES SEE **PAGES 595 & 595**

Description	Mfrs. List No.	Order Code	1+	10+	30+	50+
1 gang, 1 way	K4870 WHI	<b>.987-300</b>				
1 gang, 2 way	K4871 WHI	<b>.987-311</b>				
2 gang, 2 way	K4872 WHI	<b>.987-323</b>				
3 gang, 2 way	K4873 WHI	<b>.987-335</b>				
1 gang, intermediate	K4875 WHI	<b>.987-347</b>				
1 gang, push switch	K4878 PWHI	<b>.987-359</b>				

2 Way & Wide Rocker	Mfrs. List No.	Order Code	1+	2+	5+	10+	20+
1 Gang	K4781WHI	<b>NEW 721-6841</b>					
2 Gang	K4782WHI	<b>NEW 721-6853</b>					
3 Gang	K4783WHI	<b>NEW 721-6865</b>					

**3 Pole Fan Isolator**  
With Lock & Key K4875WHI **NEW 721-6889**

**Neon Plateswitch Locator**  
200-250V, 50Hz K3041WHI **NEW 721-6877**

## Dimmer Switches Flush Mounting



108-330: 1 Gang  
H = 86, W = 86  
Fixing centres = 60.3  
Rear projection = 12

108-331: 2 Gang  
H = 86, W = 86  
Fixing centres = 60.3  
Rear projection = 12

- Separate on/off and dimming control knobs
- Electronically controlled, no fuse
- Rotary control for light output
- Identical mounting to standard plate switches
- Complies with **IEC669-2-1**

**Note:** Not suitable for fluorescent lighting or low voltage lighting systems

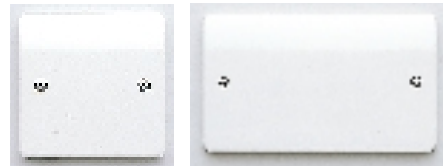
A minimum depth of 25mm is required inside the mounting box:-

Supply voltage	240V @ 50Hz
Lamp load:	1 gang 250W (max.), 60W (min.)
	2 gang 2 250W (max.), 60W (min.)
Operating temperature	0°C to +40°C

FOR SUITABLE MOUNTING BOXES SEE **PAGES 595 & 595**

Mfrs. List No.	Order Code	1+	10+	30+	50+
1 Gang	K1521WHI	<b>.987-360</b>			
2 Gang	K1522WHI	<b>.987-372</b>			

## Blanking Plates



1 Gang: H = 86, W = 86  
Fixing centres = 60.3

2 Gang: H = 86, W = 146  
Fixing centres = 120.6

Supplied with M3.5 mounting screws.

Plate Material Urea Formaldehyde (white)



Mfrs. List No.	Order Code	1+	10+	20+	30+	50+
1 gang	K3827WHI	<b>.987-384</b>				
2 gang	K3828WHI	<b>.987-396</b>				

## Compact Switch Socket Outlets, 13 Amp Single Pole Surface Mounting



1 Gang: H = 64, W = 74, D = 46      2 Gang: H = 64, W = 133, D = 46

- Ideal for mounting on narrow skirting or trunking where limited height would prohibit the use of a standard outlet

- Supplied with compact mounting box
- Approved to **BS1363 : 1984**

Housing Urea formaldehyde (white)



Mfrs. List No.	Order Code	1+	10+	20+
1 Gang	2959WHI	<b>107-719</b>		
2 Gang	2949WHI	<b>107-720</b>		

## Switch Socket Outlets, 13 Amp Single Pole, Panel Mounting



107-723 1 Gang  
Panel cut-out: H = 48.4, W = 68.2,  
Corner radius = 2.8,  
Fixing centres = 80.0,  
Rear projection = 23

107-724 2 Gang  
Panel cut-out: H = 48.4, W = 124.6,  
Corner radius = 2.8,  
Fixing centres = 136.0,  
Rear projection = 23

- Electrical connections are via brass screw terminals with either side or rear cable entry
- Supplied with 3.5 threaded eyelets and fixing screws
- Approved to **BS1363:1984**

Housing Urea formaldehyde (white)      Maximum panel thickness 2mm

Mfrs. List No.	Order Code	1+	5+	10+
1 gang	2531WHI	<b>107-723</b>		
2 gang	2532WHI	<b>107-724</b>		

## Socket Outlet, 13 Amp, Panel Mounting



- Electrical connections are via brass screw terminals with side cable entry
- Supplied with M3.5 threaded eyelets and fixing screws
- Approved to **BS1363 : 1984**

Circular Panel cutout dia = 50, Fixing centres = 60.3, Rear projection = 23

Housing Urea formaldehyde (white)      Maximum panel thickness 2mm

Mfrs. List No.	Order Code	1+	10+	20+
Circular	735WHI	<b>107-721</b>		

## Wiring Accessories — continued

### Ceiling Switch, 6 Amp Single Pole



- Supplied with mounting block
- Earth terminal is riveted to base of mounting block
- Pull cords are 1.5m minimum length
- Approved to **BS3676**



SEC100AX

Mfrs. List No.	Order Code	1+	5+	10+
1 Way 3191WHI	<b>107-698</b>			
2 Way 3192WHI	<b>107-699</b>			

### Ceiling Switch, Double Pole, 45 Amp



- Full 3mm contact gap is provided when 'off'
- Mechanical 'OFF' indicator
- Supplied with M3.5 fixing screws
- Approved to **BS3676**



Housing Urea formaldehyde (white)

H = 86, W = 86, D = 45 (in front of flush mounted surface),  
Fixing centres = 60.3, Pull cord length = 1500

FOR SUITABLE MOUNTING BOXES SEE PAGE 595

SEC105X

Mfrs. List No.	Order Code	1+	5+	10+
3164WHI	<b>.107-775</b>			

## Metal Clad Plus Range

Designed to withstand heavy industrial and commercial use. The 'Metal Clad Plus' range is manufactured from rugged, heavy gauge steel with a laquer finish and comes complete with box for surface mounting.



MK	FARNELL	MK	FARNELL
K848ALM	721-7274	K2977ALM	721-7237
K850ALM	721-7286	K3369ALM	721-7432
K932ALM	721-7353	K3390ALM	721-7420
K942ALM	721-7330	K3591ALM	721-7389
K962ALM	721-7341	K3592ALM	721-7390
K963ALM	721-7328	K5230ALM	721-7407
K972ALM	721-7316	K5232ALM	721-7365
K2446ALM	721-7262	K5242ALM	721-7377
K2477ALM	721-7250	K6302ALM	721-7298
K2945ALM	721-7225	K6305ALM	721-7304
K2946ALM	721-7249		

SEC167X

### Socket Outlets, 13 Amp



Sockets  
H = 86, W = 86 (146 2 Gang), D = 51

RCD  
H = 86, W = 147, D = 54



- Manufactured in heavy gauge steel and finished with a hard wearing epoxy/polyester and metallic powder paint coating
- Easy to install, clear white printing gives instant terminal identification
- Terminal screws are backed out and held captive within the housing
- Outboard rockers on 2 gang switchsockets help to stop accidental switching
- Double pole switching

One gang switchsockets, two gang outboard switchsockets and two gang unswitched sockets are fitted with two earth terminals on a common busbar to provide a double earth facility for use when installations comply with **Regulation 607 of BS7671, IEE Wiring Regulations.**

SEC319

Non Switched	Mfrs. List No.	Order Code	1+	2+	5+	10+	20+
1 gang	K848ALM	<b>721-7274</b>					
2 gang	K850ALM	<b>721-7286</b>					
<b>DP Switched</b>							
1 gang	K2977ALM	<b>721-7237</b>					
2 gang	K2946ALM	<b>721-7249</b>					
2 gang, outboard rockers	K2945ALM	<b>721-7225</b>					
1 gang + neon	K2477ALM	<b>721-7250</b>					
2 gang + neon	K2446ALM	<b>721-7262</b>					
1 gang, RCD protected, 30mA (active)	K6302ALM	<b>721-7298</b>					
1 gang, RCD protected, 30mA (passive)	K6305ALM	<b>721-7304</b>					

## Lighting Switches



H = 86, W = 86, D = 47

- Manufactured to **BS3676 Pt 1 1989**
- Earth terminal is fitted to each box
- Terminal capacity 1.6 m<sup>2</sup> (max)
- Box has 5 20mm knockouts, all boxes have base knockout
- Rated to 10A



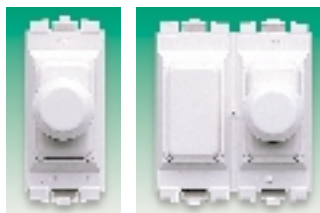
These switches do not have to be derated when used with fluorescent or inductive loads.

SEC317

Mfrs. List No.	Order Code	1+	2+	5+	10+	25+
1 gang K3591ALM	<b>721-7389</b>					
2 gang K3592ALM	<b>721-7390</b>					

## Grid Plus and Logic Plus

### Grid Plus Dimmer Switches



- Dimmer radio frequency is suppressed to **BS EN55014 (CISPR 14)**
- Suitable for use with tungsten filament lamps between 220 – 240V
- Conforms to **IEC 669-2-1 (BS EN 50082-1)**

Order Codes **721-7997** (Mfrs. List No. **K4511WHI**) and **721-8000** (Mfrs. List No. **K4510WHI**), are for use with low voltage tungsten halogen lighting that do not use electronic transformers.

SEC420

Power Rating	Mfrs. List No.	Order Code	1+	2+	5+	10+	20+
220W	K4501WHI	<b>721-7973</b>					
400W	K4500WHI	<b>721-7985</b>					
220W	K4511WHI	<b>721-7997</b>					
400W	K4510WHI	<b>721-8000</b>					

## Masterseal

MK Masterseal is a truly unique, **IP56** rated range of electrical accessories. The strongest feature of masterseal is a specially formulated gel which enables virtually any standard 13 amp plug to be safely used in the Masterseal socket and still maintain **IP56** integrity. Made from impact-resistant poly-carbonate and tested well in excess of british standards. Masterseal will not discolour, crack, or fade in UV light.



SEC238

### Sockets – IP56



1 Gang Socket  
H = 95, W = 95, D = 80  
2 Gang Socket  
H = 115, W = 175, D = 80  
4 20mm entries

1 Gang R.C.D.  
H = 115, W = 175, D = 80  
5 20mm entries



- Accepts virtually any standard 13A plug
- 3 pin shutter only allows insertion of plug when all three pins present
- Sockets tested to last 30,000 operations (twice the British Standard)
- 30mA trip residual current version available offering full R.C.D. protection and mains power failure trip which prevents the sudden energisation of potentially dangerous machinery when the power resumes
- **IP56** Polycarbonate housing ● Conforms to **BS1363:1984**



	Mfrs. List No.	Order Code	Price Each			
			1+	5+	10+	25+
1 gang	56480	.530-773				
2 Gang	56481	.650-262				
1 gang R.C.D.	56301	.530-785				

SEC239

## Switches 10 Amp – IP56



- Large rocker allows ease of use even with gloved hands
- Integral green neon makes the unit visible in the dark
- Switches do not need to be derated when used with fluorescent or inductive loads (except 530-827)
- **IP56** polycarbonate housing ● All switches conform to **BS3676 Part 1: 1989**



S P Switched	Mfrs. List No.	Order Code	Price Each			
			1+	5+	10+	25+
1 gang, 1 way	56400	.530-797				
1 gang, 2 way	56401	.530-803				
2 gang, 1 way	56402	.530-815				
1 gang, 2 way, Press (mom)	56408	.530-827				

SEC240

## Photo-Electric Switch – IP56



- Automatically switches on at dusk and off at dawn or after a user adjustable time period (1 to 15hr) whichever is sooner
- Used for automatic control of lighting in car parks, loading bays, external stairways and walkways, porches and driveways
- **IP56** polycarbonate housing



H = 95, W = 95, D = 85, 4 20mm entries

Supply voltage 230V ac  
 Max current 6A  
 Lamp load (max) Tungsten 1kW  
 Halogen 1kW  
 Fluorescent tubes 1.2kW (without p.f. correction)  
 1kW (with p.f. correction)  
 Switching ambient light level ON 25 Lux (nom), OFF 40 Lux (nom)  
 Operating temperature -25°C to +55°C

SEC241

	Mfrs. List No.	Order Code	Price Each			
			1+	5+	10+	25+
1 gang	56748	.530-840				

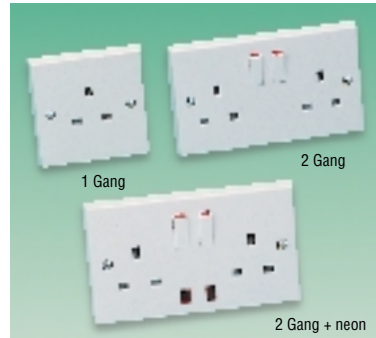
## MEM Wiring Accessories

MEM	FARNELL	MEM	FARNELL	MEM	FARNELL
2401	147-685	3025	259-160	3551	259-238
2402	147-686	3026	259-172	3605	259-299
2411	258-969	3100	147-683	3650	259-287
2412	258-970	3101	147-684	4500	259-305
3002	147-681	3106	259-147	4501	147-687
3003	147-682	3107	259-159	4502	147-688
3006	146-970	3503	259-226	4505	259-317

SEC137

## Delta Range

### Socket Outlets, 13A



1 Gang H = 86, W = 86, Fixing Centres = 60.3 2 Gang H = 86, W = 146, Fixing Centres = 120.7

- Switched versions provide double pole isolation
- Red printed rocker switch indicates on position
- Supplied with M3.5 mounting screws
- Approved to **BS1363 : 1984**



Housing Urea formaldehyde (white)

SEC188

	Mfrs. List No.	Order Code	Price Each			
			1+	10+	20+	100+
1 Gang, non switched	3002	.147-681				
2 Gang, non switched	3003	.147-682				
1 Gang, DP switched	3100	.147-683				
2 Gang, DP switched	3101	.147-684				
2 Gang, DP switched + neon	3107	259-159				

### Panel Mounting Socket Outlet



- 13A socket for panel mounting, in moulded white urea formaldehyde
- Approved to **BS1393 : 1984**

Panel Mounting cut-out dia = 50mm  
 Fixing holes dia 4 at 60.3 centres

**Note:** To comply with **BS1363** the panel mount socket must be at least 10mm from panel edge

Mfrs. List No. F3006

SEC185

	Order Code	Price Each			
		1+	10+	20+	100+
Panel Mounting	.146-970				

### Socket Outlets, Non UK Types



259-287  
 H = 86, W = 86,  
 Centres = 60.3

259-299  
 H = 86, W = 86,  
 Centres = 60.3

- 16A, 2 pin socket outlets supplied with M3.5 fixing screws
- 259-287 conforms to CEE7

**Note:** These sockets should not be installed in British ring main circuits

SEC182

	Mfrs. List No.	Order Code	Price Each			
			1+	10+	20+	100+
	3650	259-287				
	3605	259-299				

Continued

Delta Range — continued

Blanking Plates



H = 86, W (1 Gang) = 86, (2 Gang) = 146  
Fixing centres (1 Gang) = 60.3, (2 Gang) = 120.6

Supplied with M3.5 mounting screws.

SEC221

Mfrs. List No.	Order Code	1+	10+	20+	100+
1 Gang 3503	.259-226				
2 Gang 3551	.259-238				

Mounting Boxes, Surface



259-317 H = 88, W = 33, D (ext) = 18  
259-305 Standard boxes H = 90, W (1 gang) = 90, (2 gang) = 150  
147-688 H = 90, W (1 gang) = 90, (2 gang) = 150

- Manufactured in white urea formaldehyde
- 16 and 18mm deep boxes have one earth terminal in the base of the box
- All boxes have moulded knockouts for cable entry

SEC183

Mfrs. List No.	Order Code	1+	10+	20+	100+
<b>16mm Deep Switchbox</b>					
1 Gang 4500	.259-305				
<b>28mm Deep Boxes</b>					
1 Gang 4501	.147-687				
2 Gang 4502	.147-688				
<b>18mm Deep Architrave Box</b>					
1 Gang 4505	.259-317				

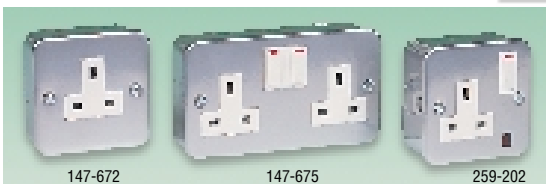
Surface Aluminium Range

Manufactured from steel, zinc galvanised and finished with an aluminium epoxy powder coating, the surface aluminium range is suitable for any industrial or commercial application. Supplied complete with mounting box with 20mm knockouts.

MEM	FARNELL	MEM	FARNELL
3041	147-672	3146	259-214
3042	147-673	3244	147-677
3141	147-674	3245	259-135
3142	147-675	5041	259-263
3145	259-202	5042	259-275

SEC146

Socket Outlets, 13A



1 Gang H = 82, W = 82, Fixing centres = 60.3 2 Gang H = 82, W = 144, D = 45, Fixing centres = 120.7

- Supplied with M3.5 fixing screws
- Earth terminal in mounting box
- Approved to BS1363 : 1984



SEC186

Mfrs. List No.	Order Code	1+	10+	20+	100+
1 Gang, non switched 3041	.147-672				
2 Gang, non switched 3042	.147-673				
1 Gang, DP switched 3141	.147-674				
2 Gang, DP switched 3142	.147-675				
1 Gang, DP switched + neon 3145	259-202				

Blanking Plates



H = 81, W (1 Gang) = 81, (2 Gang) = 142, Fixing centres (1 Gang) = 60.3, (2 Gang) = 120.6

Supplied with M3.5 mounting screws.

SEC214

Mfrs. List No.	Order Code	1+	10+	20+	100+
1 Gang 5041	.259-263				
2 Gang 5042	.259-275				

Switched Twin or Single Socket and Fuse Spur



White Plastic - 2 Gang Plate H = 84, W = 145, D = 20  
13A Fused Connection Unit H = 85, W = 85, D = 32



Metal Clad - 2 Gang Plate H = 76, W = 136, D = 47

White Plastic - 1 Gang Plate H = 85, W = 85, D = 34

- Comprehensive range of 13A sockets and fused connection unit with double pole protection against earth leakage faults
- All sockets are **SWITCHED** for greater flexibility and safety
- Sockets are available in Twin or Single, White Plastic or Metal Clad and Latching or Non-Latching RCD type
- **Latching RCD**: Power is restored automatically following a power cut (vital for equipment on remote sites, freezers, faxes, etc.)
- **Non-latching RCD**: Manual reset is required following a power cut (important safety feature when using power tools)
- Range includes **UNIQUE** single switched socket on a 1 gang plate allowing direct replacement of existing non-RCD single sockets
- 13A fused connection unit gives local RCD protection for hard wired equipment (eg. stair lifts, hand dryers, pond pumps, etc.)
- White plastic sockets and spur require surface or flush mounting boxes at least 25mm deep. Metal clad sockets come with 40mm deep surface mount metal box with 8 knock-outs
- Standard sizes and slimline design of range allow quick and easy replacement of non-RCD sockets and spur in offices, factories and homes

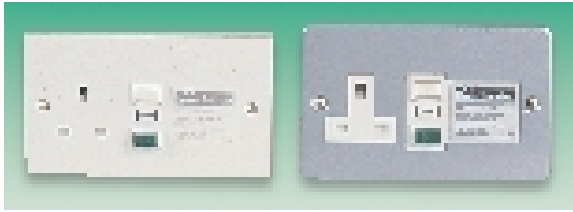
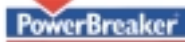


Voltage Rating	220-240 Vac 50Hz	Current Rating	13A
RCD Type	Double Pole	Trip Speed	40ms
Conform to	<b>BS1363, BS7288</b>	Rated Trip Current	30mA
Cable Capacity	3 2.5mm (up to 10.5mm flex for fused spur)		

FUS114

Mfrs. List No.	Order Code	1+	5+	10+	25+
<b>Twin Socket - 2 Gang Plate</b>					
White Plastic-Latching	RCD06WL	<b>187-320</b>			
White Plastic-Non Latching	RCD05W	<b>187-331</b>			
Metal Clad-Latching	RCD08ML	<b>187-343</b>			
Metal Clad-Non Latching	RCD07M	<b>187-355</b>			
<b>Single Socket - 2 Gang Plate</b>					
White Plastic-Latching	RCD2WL	<b>187-367</b>			
White Plastic-Non Latching	RCD01W	<b>187-379</b>			
Metal Clad-Latching	RCD04ML	<b>187-380</b>			
Metal Clad-Non Latching	RCD03M	<b>187-392</b>			
<b>Single Socket - 1 Gang Plate</b>					
White Plastic-Latching	RCD12WL	<b>187-409</b>			
White Plastic-Non Latching	RCD11W	<b>187-410</b>			
<b>13A Fused Spur-1 Gang</b>					
White Plastic-Latching	RCD10WL	<b>187-422</b>			

## Single or Twin Socket



Flush mounting  
H = 85.7, W = 146.1, D = 18.9

Metal clad  
H = 90.8, W = 144.3, D = 51.4

A 13A mains socket providing double pole protection against earth leakage faults. The unit incorporates radio frequency and transient voltage protection. To reset after a fault the plug must be removed. Available in White plastic flush mounting or metal clad versions.

Manufactured and tested to **BS1363** and **BS4293**.

The flush mounting plastic version is for use with mounting boxes of at least 25mm depth, see **Section 6**.

Voltage rating	240V ac	Trip time	40ms
Maximum load	13A	Trip current	30mA

Mfrs. List No. H82W = 179-552, H82M = 179-553, H22W = 178-953, H22M = 178954

FUS201X

Single Socket	Order Code	Price Each		
		1+	5+	10+
Flush mounting, white	.179-552			
Metal clad	.179-553			
Twin Socket	Order Code	Price Each		
		1+	5+	10+
Flush Mounting, White	.178-953			
Metal Clad	.178-954			

## 13A Switch Socket Outlet – ‘Sentry Socket’



Flush mounting, white  
H = 86, W = 146, Fixing centres = 120.6

Metal clad  
H = 89, W = 150, D = 50.

A 13A mains socket providing double pole protection against earth leakage faults. Power is not automatically restored to potentially dangerous equipment following an interruption to the power supply. In order to restore the supply following a power failure, the unit must be switched off and then back on.

Available in white plastic flush mounting or metal clad versions.

Trip current	30mA	Mfrs. List No.	6300WHI = 107-718
Supply voltage	220V – 240V, 50Hz		6302ALM = 108-228

FUS169X

Flush mounting, white	Order Code	Price Each	
		1+	5+
Metal clad	.107-718.		
	.108-228.		

## 13A Twin Socket Outlets

## PROTECTOR



540-523  
H = 83, W = 146, D = 38 overall

540-535  
H = 78, W = 138, D = 45

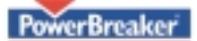
Twin 13A mains socket providing RCD protection against earth leakage faults even where live and neutral connection have been reversed. Double pole switching provides maximum protection.

Voltage rating	240V 50Hz	Current rating	13A
Trip current rating	30mA	Typical trip time	30ms
Type tested to	<b>BS7288</b>		

FUS254X

	Order Code	Price Each		
		1+	5+	10+
White plastic	540-523			
Metal clad	540-535			

## Fused 13A Spur



A single gang fused RCD spur unit which fits a standard 25mm back box and can directly replace a standard fused connection unit. Cable outlet in the lower face is via a slide out blanking plug for neat and easy installation. The captive fuse carrier can be padlocked open once the fuse has been removed for maintenance purposes.

H = 86, W = 86  
Forward Projection 32.2

Voltage rating	240V 50Hz	Trip current	30mA
Maximum load	13A	Fuse fitted	13A (to <b>BS1362</b> )
Contact break	Double pole	Cable capacity	6mm <sup>2</sup>

Approved to **BS5733** and **BS7288**.

FOR SUITABLE MOUNTING BOX SEE **PAGE 592**

FUS255X

Mfrs. List No.	Order Code	Price Each		
		1+	5+	10+
H92	540-420			

## Home Automation

### RF Remote Control Switch



H = 165,  
W = 68,  
D = 68

### Types of System

A wireless remote control mains switch kit for retrofitting to existing equipment or designing into OEM equipment. The switching module is enclosed in a box which can be Surface or panel mounted.

- RF control signal passes through walls and ceilings
- 25m range
- Ideal for mounting in ceiling rose or switch back box
- On/Off control from handset
- Built in safety features
- High security - 20,000 possible code combinations

Rating: 1000W (4A approx.)

SEC390

Order Code	Price Each		
	1+	5+	10+
306-2788			

## Fire Detection

### Fire Detection and Alarm Systems

The 'fire precautions and workplace regulations 1997' is the principal legislative control for fire detection and alarm systems to safeguard buildings and their occupants from the risk of fire. BS5839 sets the standard for products, scheme, design and maintenance. The EMERGILITE products listed in this section are designed to comply with BS5839 pt 4 + EN54 Pt2 4Pt 4 and are suitable for use in BS5839 part 1 installations.

A fire detection system, comprises a control panel, detectors, manual breakglass call-points and alarm sounders.

#### Two main types of system

A **conventional** system uses detectors which have two states 'normal' or 'fire'. In the event of a fire the control panel will identify the zone where the fire has started and activates the alarm. Conventional systems are suited to small or medium sized premises.

An **analogue addressable** sensor will give the precise location where the fire or fault has occurred. The sensor converts an analogue reading to a digitally encoded output to represent the ambient state near the sensor.

SEC430

Fire Detection — continued

Conventional Fire Detection & Alarm Panels

Firetec Range



A range of control panels designed to protect small to medium sized buildings with up to 4 zones. The range meets the requirements of **EN54 parts 2 & 4** and can be used on installations meeting **BS5839 part 1**.



- 1, 2 and 4 zone panels
- Push keypad operation
- 1 man walk test operation
- 24 volt sounder output
- 72 hour standby
- 12v battery included

Detection circuits	Maximum 32 detectors per zone
Sounder output	2 circuits per panel
Auxiliary relay contacts	2 set of volt-free contacts
Class Change	1 pair of normally open terminals
Power Supply	230 Vac 50Hz
Fault Monitoring	Zone open and short circuit monitor with EOL component
Controls	Access via security code
Dimensions HLD (MM)	261x306x78
Construction	Cool grey steel back box with moulded PC front panel

SEC434

	Order Code	1+	5+	10+
Control Panel 1 zone	321-1253			
Control Panel 2 zone	321-1277			
Control Panel 4 zone	321-1289			

Starter Pack for smaller premises

Firetec



- 1 - 'Firetec 1 'zone panel
- 3 - detectors with bases
- 1 - manual call point
- 2 - sounders



SEC437

	Order Code	1+	5+	10+
Firetec Starter Pack	321-1290			

Conventional Smoke and Heat Detectors

Firetec Range



Detectors respond to alarm situations in a given zone signalling a fire condition via the fire panel display.



- **Fixed Temperature Heat Detectors**  
An alarm signal is given when a temperature threshold is exceeded. Ideal for areas where high temperatures are normal (Kitchens etc)
- **Rate of Rise Heat Detector**  
Indicates an alarm as temperature increases
- **Detector Base**  
Universal detector base fitted with a diode as standard, so call points and detectors continue to work in the event of a detector head removal
- **Optical Smoke Detector**  
Detects large smoke particles via a photo sensor  
Ideal for smouldering or slow burning fires
- **Ionisation Smoke Detector**  
Small and large smoke particles will trigger an alarm signal by reducing current flow between 2 electrodes.  
To detect fast burning and less smokey fires

SEC431

	Order Code	1+	5+	10+
Detector Heat Fixed	321-1150			
Detector Heat Rate-Rise	321-1198			
Detector Smoke-ION	321-1162			
Detector Smoke ION-INT	321-1174			
Detector Smoke-Optical	321-1186			
Detector BaseC/W Diode	321-1204			

Conventional sounder



Standard	Bedhead (Square)
103dBA at 1m	98dBA at 1m
93 diameterx60	86x86x45
Shallow base	
Volume control	
Current Consumption	18 mA
Operating temperature	-40° to +80°C
Construction	ABS



SEC433

	Order Code	1+	5+	10+
Sounder Round	321-1149			
Sounder Square	321-1370			

Conventional Bell

Motorised fire-bell (indoor use)



- Simple to install
- 93dBA at 1m

Current consumption	25mA
Voltage Range	18-30V dc
Material Range	metal/plastic base
Dimensions (mm)	150 diameter x 63
Colour	Red

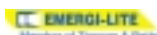


SEC435

	Order Code	1+	5+	10+
Bell	321-1137			

Conventional Break-Glass Call-points

'Firetec' Range



- Surface and recessed callpoints complaint with BS5839 part 2
- Frangible glass will not fragment when operated Simple key test facility
- Simple key test facility



SEC432

	Order Code	1+	5+	10+
Call Point Recessed	321-1230			
Call Point Surface	321-1241			
Spare Glass	321-1228			

Red Beacon



- Enhanced Optical Design
- Deep base
- IP65
- 24V



SEC436

	Order Code	1+	5+	10+
Beacon	321-1216			



## Weatherproof Wiring Accessories

### Plugs and Sockets, IP56 Protected



275-116  
H = 101, W = 101, D = 98

275-128 H = 198, W = 101, D = 98  
(275-207 for switch only)

275-153  
L = 72 (from panel front)  
Dia. = 78

A range of grey polycarbonate faced accessories mounted in reinforced PVC enclosures giving protection to IP56.

13A mains sockets require mains plug 275-153 to maintain IP56 rating. Plugs and sockets of different voltages, currents and pin arrangements will not fit together.

The 13A mains plug 275-153 conforms to BS1363, has a 13A BS1362 fuse includes a screw-on ring to maintain the plug to socket seal and has a rubberised cable gland with polycarbonate cable grip. All conform to BS5490, BSEN60529 and have Lloyds register of shipping approval.

SEC197

13A Sockets	Mftrs.	Order Code	Price Each		
	List No.		1+	5+	10+
1 Gang non switched	56S0313	275-116			
1 Gang DP switched	56C313	275-128			
13A Plug	56P313	275-153			

## Mounting Boxes

### Flush Zinc Plated Steel



16mm Deep Switch Box  
H = 72, W = 72  
Fixing centres = 60.3

1 Gang Accessory Box  
H = 75, W = 75  
Fixing centres = 60.3

2 Gang Accessory Box  
H = 75, W = 135  
Fixing centres = 120.6

- 16mm deep switchbox is fitted with a PVC grommet and accepts 1, 2 or 3 gang plate switches
- All boxes have a brass earth terminal fitted in the base and steel lugs one of which is adjustable
- Approved to BS4662 : 1970



Cable entry Accessory boxes have knockouts in base and all sides

FOR PVC GROMMETS TO FIT 20mm KNOCKOUTS SEE ORDER CODE 150-440, PAGE 183

SEC97X

1 Gang Switch Box	Mftrs.	Order Code	Price Each		
	List No.		1+	10+	20+
16mm deep	3995ZIC	107-715			
1 Gang Accessory Box					
25mm deep	861ZIC	107-716			
35mm deep	866ZIC	107-713			
2 Gang Accessory Box					
25mm deep	862ZIC	107-717			
35mm deep	886ZIC	107-714			
47mm deep	878ZIC	107-726			

## Mounting Boxes, Surface



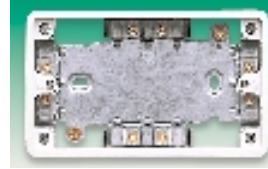
20mm Mounting Frame  
H = 87, W = 87  
Fixing centres = 60.3



30mm Box  
H = 87, W = 87 (2 gang = 148)  
Fixing centres = 60.3  
(2 gang = 120.6)



Dual 2 1 Gang 38mm Box  
H = 86, W = 172  
Fixing centres = 2 60.3



- 20mm mounting frame is intended for mounting on trunking
- 16mm switch box accepts 1, 2 and 3 gang plateswitches
- 30mm deep boxes are for surface mounting 1 and 2 gang power accessories
- 38mm deep box will accept any two flush accessories which are 86mm square with 60.3mm fixing centres
- 40mm deep 2 gang box is required for surface mounting of the 45A DP plateswitch, the RCCB protected 13A entry socket outlet and other accessories where extra wiring space is required
- Approved to BS5733: 1979

Housing Urea Formaldehyde (white)

SEC98X

Mounting Frame	Mftrs. List No.	Order Code	Price Each				
			1+	10+	20+	30+	50+
1 gang, 20mm deep	K2134WHI	987-402					
1 Gang Switch Box							
16mm deep	K2160WHI	.987-414					
1 Gang Accessory Box							
30mm deep	K2140WHI	.987-426					
40mm deep	K2031WHI	.987-438					
2 Gang Accessory Box							
30mm deep	K2142WHI	.987-440					
40mm deep	K2172WHI	.987-451					
Dual 2 1 Gang Box							
38mm deep	K2025WHI	987-463					

Mounting Box	Mftrs. List No.	Order Code	Price Each			
			1+	5+	10+	20+
3 Gang, 20mm deep	K2153WHI	NEW 721-6932				
Trunking Mounting Frame						
2 Gang, 20mm	K2133WHI	NEW 721-7031				
Moulded MI cable Boxes						
1 Gang, 10 Clamps	K2131WHI	NEW 721-7018				
2 Gang, 12 Clamps	K2132WHI	NEW 721-7020				
Metal Frames						
1 Gang	K2200	NEW 721-6956				
2 Gang	K2202	NEW 721-6968				
Steel Boxes without Knockouts						
1 Gang, 41mm	K2211 ALM	NEW 721-8217				
2 Gang, 41mm	K2212 ALM	NEW 721-8229				
Steel Boxes with 20mm Knockouts						
1 Gang, 41mm deep	K2213 ALM	NEW 721-8230				
2 Gang, 41mm deep	K2214 ALM	NEW 721-8242				
3 Gang, 25mm deep	K863	NEW 721-8205				

## Dry Lining Boxes, Flush



Housing PVC

- Accommodates partition thicknesses between 6mm and 16mm
- Automatic clamp device on cable entry
- All round flange for flush fit
- Approved to BS4662 where applicable

108-364 Dry Lining Box Cut-out: H = 75, W = 75 (1 gang), D = 35, W = 136 (2 gang), Fixing centres = 60.3 (1 gang), 120.6 (2 gang)

SEC123X

Mounting Box	Mftrs. List No.	Order Code	Price Each		
			1+	10+	20+
1 gang	QFB1WHI	108-364			
2 gang	QFB2WHI	108-365			

Continued

## Magnetic Door Holder

### Magnetic Door Holders



- Energise to hold electromagnetic door holders which can be electrically released in the event of fire
- AC and DC versions available
- Integral test/override button
- Complete with installation instructions

Mfrs. List No. YR/DH/D-720-537,  
YR/DH/N = 720-549

H = 88, W = 88, D = 48

Operating Voltage	Current Consumption	Holding Force (kg)	Maximum Residual Force (kg)	Order Code
24V dc ±25%	80mA	11.3	0.8	720-537
230V ac ±10%	60mA	11.3	0.8	720-549

HS194X

#### Price Each

Voltage	Order Code	1+	10+	25+	50+
24V dc	<b>720-537</b>				
230V ac	<b>720-549</b>				

## 24 Hour and 7 Day - 'Panelmaster'



H = 72, W = 72, D (behind panel) = 26  
Panel cut-out = 67 67  
(radiused corners 2.5)  
Terminals = 6.3 tabs

- Compact 72 x 72mm single channel time switches for panel or surface mounting
- Voltage-free relay output contacts rated 16A 240V
- 24 hour unit has 4 ON/OFF programmes per day
- 7 day unit has 6 ON/OFF programmes, each of which can be used every day, every weekday, every weekend or on individual days
- Simple two button programming
- Change/override until next programme, and permanent ON or OFF
- Rechargeable metal hydride battery with 1000 hour reserve

Supply voltage 220-240Vac 50Hz  
Output (voltage free) SPCO relay 16A @ 240V, 6A inductive  
Operating temperature -10°C to +40°C  
Tamperproof cover The unit can be made tamperproof by wiring the cover supplied in place, still leaving the display visible

Mfrs. List No.	Order Code	1+	10+	25+	50+
24 Hour EL11	<b>678-314</b>				
7 Day EL17	<b>678-326</b>				



## Electricity Detector

### Power Tracer<sup>®</sup> Mains Electricity Detector



- No current flow is needed for correct operation
- 2 AAA batteries required for operation (Order Code 908-496)
- Power Tracer<sup>®</sup> will not detect live current when the cable is shielded by metal components



SEC416

Voltage detection range	Mfrs. List No.	Order Code	1+	5+	15+	20+
240V - 415V	6090	<b>721-8308</b>				

## Electronic Time Switches

### 7 Day - Single Channel/Two Channel DIN Rail Mounting

### THEBEN



H = 90, W = 35, D = 66

- Pre-set with UK time and automatic Summer/Winter changeover
- Pre-programmed with European and USA time standards which can be easily selected
- Integral 6 year power reserve
- Can be programmed prior to installation
- Very flexible 24 hour, 7 day or several day 'free block' programming
- Holidays of up to 99 days can be programmed up to 3 months in advance
- Permanent on/off or over-ride to next programme



Operating voltage 230V ac +10% -15% 45-60Hz  
Output Volt free SPCO  
Switch rating 16A resistive 10A inductive  
Operating temperature -10°C to +50°C  
Setting resolution 1 minute  
Switching programmes TR610S - 7 ON/OFF programmes  
TR612S - 18 ON/OFF programmes distributed as required between channels

Mfrs. List No. TR610S = 987-050, TR612S = 987-074

126

	Order Code	1+	5+	10+	25+	50+
Single channel	<b>.987-050</b>					
Two channel	<b>.987-074</b>					

## 24 Hour and 7 Day Electronic



- Simple two button programming
- 24 hour clock/timer display
- Self-cancelling override for instant ON/OFF control
- Integral thermal fuse for extra protection
- Integral rechargeable battery gives 1000 hours backup
- Manual switch for permanent off or auto

H = 115, W = 74, D = 50

Operating voltage 220-240Vac 50Hz  
Switching current/load 13A res. (3kW max.), 6A inductive  
Operating temperature -10°C to +50°C  
Switching programmes 24 Hour type 4 ON/OFF  
7 day/24 Hour type: 6 ON/OFF independent switching commands allocated over a 7 day period (up to 42 ON/OFFs per week)

Mfrs. List No.	Order Code	1+	10+	25+	50+
24 Hour ETU2000	<b>.678-296</b>				
7 day/24 hour ETU8000	<b>.678-302</b>				



## 7 Day, Single and Two Channel, DIN72



H = 104, W = 72, D = 69  
Single channel 177-479  
Two channel 179-432

- Preset with UK time and automatic Summer/Winter changeover. Feature can be disabled or set to European or USA time standards
- 18 ON/OFF programs per week (can be distributed as required over 2 channels on TR636S)
- ON/OFF commands may be repeated over any number of days without using additional programs
- Manual override, permanent ON/OFF and SL7D has random switching feature

- Holiday suspension of programs (maximum 99 days programmed up to 3 months in advance)
- LCD displays time, day, holiday, Summer/Winter and ON/OFF status
- Integral 6 year power reserve, which only operates to maintain memory when mains supply is not present
- Supplied with transparent cover, detachable base and panel mount clip (cut out 68mm sq)

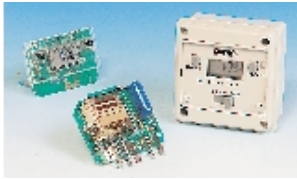
Supply Voltage 230-240Vac +6% -10% 50-60Hz  
Output: 177-479  
Voltage Free SPCO  
16A resistive 10A inductive @ 250Vac  
179-432  
2 Voltage Free SPCO  
6A resistive 2A inductive @ 250Vac  
Operating Temperature -10°C to +50°C  
Setting Resolution 1 minute  
Clock accuracy Better than or equal to ±1 sec/day  
Mfrs. List No. SL7D = 177-479, TR636S = 179-432



51

	Order Code	1+	5+	10+	25+
Single channel	.177-479				
Two channel	.179-432				
Panel mounting kit	179-434				

## 24 Hour and 7 Day



Unhoused modules: H = 40, W = 54.5, D (module) = 12, D (incl. terminals and buttons) = 37.5  
 Housed modules: H = 72, W = 72, D (behind panel) = 26  
 Panel cut-out = 67 67 (radiused corners 2.5)  
 Relay board: H = 54, W = 54, D = 14

Connections:  
 Pin 1: Positive battery charge plus relay current  
 Pin 2: Common  
 Pin 3: Relay connection  
 Pin 4: Output and relay connections

### Time Switch Modules

- 24 hour modules have 4 ON/OFF programmes
- 7 day modules have 6 ON/OFF programmes, daily, weekly, weekend or weekday options
- Easy 2 button programming
- Change/ Override until next programme
- Rechargeable metal hybrid battery with 1000 hour reserve
- Requires only an external resistor, diode and relay to switch mains
- Modules available with or without housing
- Housed units are for panel surface mounting

### Power Supply and Relay Board

- Generates charge current for module battery
- All connections via 0.25 inch blades

Output/relay connection (pin4) NPN open collector, max 10mA, 47V  
 Operating temperature 0 to 55°C  
 Tamperproof cover The unit can be made tamperproof by wiring the cover supplied in place, still leaving the display visible

Power Supply-  
 Operating voltage 220-240V ac 50Hz  
 Output Volt free SPCO  
 Switch rating 16A resistive 6A inductive  
 Operating temperature -10°C to +40°C

Mfrs. List No.	Order Code	1+	10+	25+	50+
<b>Without Housing</b>					
24 hour	MEU11	678-340			
7 Day	MEU17	678-351			
<b>With Housing</b>					
24 Hour	EMU11	678-363			
7 Day	EMU17	678-375			
<b>Power Supply/Relay Board</b>					
	PB05	987-153			

## 24 Hour & 7 Day 'SupplyMASTER'

### Fused Spur Timeswitch



H = 85, W = 85, D = 38

- Combined switched fused spur and timeswitch
- Suitable for combination boilers and storage, convector or water heaters
- Simple 2 button programming
- Self cancelling over-ride for instant on/off
- 1000 hour rechargeable memory back-up
- Voltage free contacts
- Fits to a single gang wall box, complete with double cable clamp for flying lead connections

Operating voltage 220-240V ac 50Hz  
 Switching current/load 13A resistive (3kW max.) 6A inductive  
 Lighting/motor loads 500W fluorescent or low energy, 2500W filament lighting/1hp motor  
 Operating temperature -10°C to +40°C  
 Setting resolution 1 minute  
 Switching programmes 24 hour type - 4 ON/OFF commands per day  
 7 day type - 6 ON/OFF commands allocated across every day, every weekday, weekends or individual days (max. 42 ON/OFFs per week)

Mfrs. List No.	Order Code	1+	10+	25+	50+
24 hour	FST11	987-037			
7 day	FST17	987-049			

## 13A Plug-in Switches

### Electronic - Digital, 24 Hour and 7 Day



H = 81, W = 60, D = 41 (excl. pins)

Operating Voltage 220-240Vac 50Hz  
 Switching Current/Load 13A resistive (3kW max) 6A inductive  
 Lighting/motor loads 500W fluorescent or low energy, 2500W filament lighting/1hp motor  
 Operating Temperature -10°C to +40°C  
 Setting Resolution 1 minute  
 Switching Programmes 24 Hour Type: 4 ON/OFF commands per day  
 7 Day Type: 6 ON/OFF commands allocated across every day, every weekday, weekends or individual days (max 42

ON/OFFs per week)

Mfrs. List No: ETU11 = 478-544, ETU17 = 678-284

	Order Code	1+	10+	25+	50+
24 hour/random	478-544				
7 day/24 hour/random	678-284				

### Motor Driven - 24 Hour and 7 Day



H = 71, W = 71 D = 51

- Motor driven 24hr 7 day time switches
- Plugs into standard 13A socket
- Switches electrical appliances ON/OFF automatically at preset times of the day
- Manual override facility

Pin Type Time setting pins are inserted at required positions. Supplied with 6 pins.  
 Segment Type Time set by switching of segments on dial.

Operating voltage 220-240V ac 50 Hz  
 Switch rating 240V ac, 13A resistive (3kW), 5A inductive  
 Setting time 24 hour types: 15 mins (min.ON/OFF interval 30 mins for pin type)  
 7 day types: 2 hours (min.ON/OFF interval 4 hours for pin type)

Mfrs. List No: TS800 = 424-705, TS830 = 280-860, TS840 = 678-272,

	Order Code	1+	10+	25+	50+
24 Hour, pin type	424-705				
24 Hour, segment type	280-860				
7 Day, segment type	678-272				



Notes